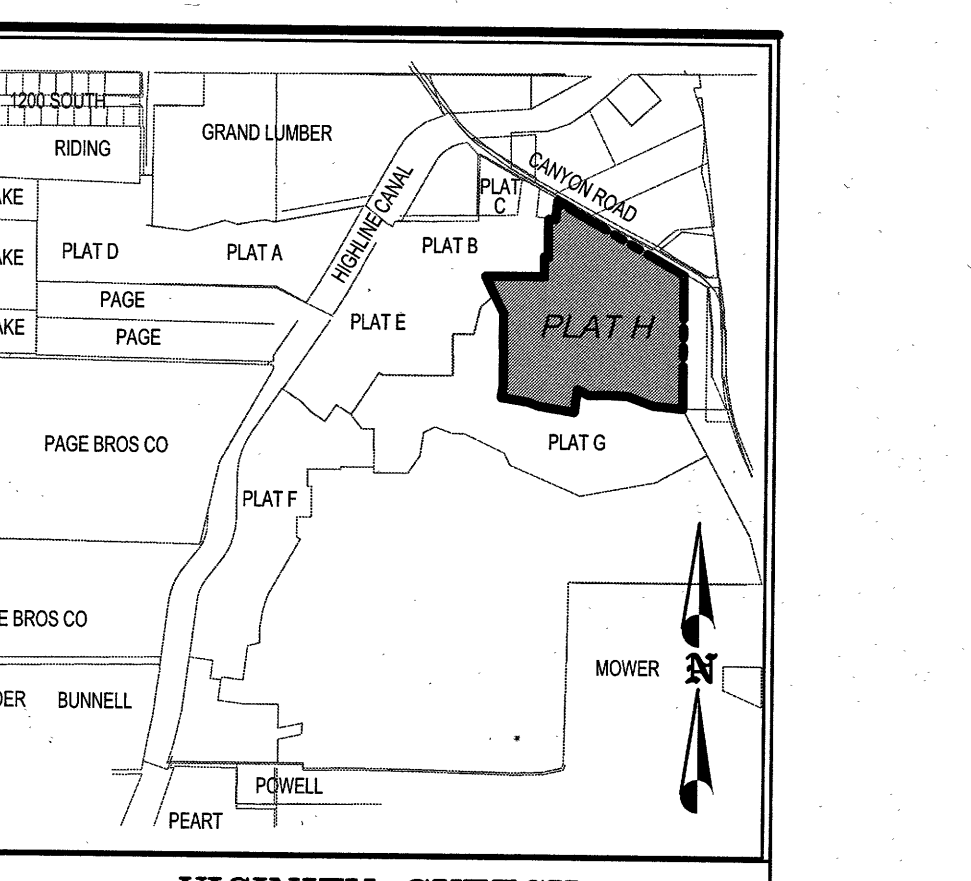


CURVE	RADIUS	LENGTH	DELTA	CHORD	BEARING
C1	80.00	15.23	175°07'27"	15.21	S59°39'00"E
C2	100.00	88.39	52°39'19"	85.48	S52°29'35"E
C3	100.00	35.97	30°25'32"	35.78	N15°25'25"E
C4	225.00	224.83	57°15'06"	215.59	N33°44'45"E
C5	225.00	110.97	28°15'34"	109.85	N19°14'59"E
C6	225.00	113.86	28°59'31"	112.84	N17°52'32"E
C7	200.00	334.51	89°49'49"	299.86	N14°27'23"E
C8	200.00	143.25	41°02'19"	140.20	N41°51'08"E
C9	200.00	191.28	54°47'33"	184.08	N30°14'21"E
C10	200.00	88.39	25°19'24"	87.68	N20°47'49"W
C11	150.00	55.57	21°13'29"	55.25	S79°18'42"E
C12	130.00	60.07	28°28'28"	59.53	S13°25'39"E
C13	130.00	81.39	22°38'32"	81.05	S37°52'38"E
C14	150.00	105.97	17°33'52"	105.05	S14°12'38"E
C15	250.00	38.36	19°23'24"	38.58	S14°53'29"W
C16	70.00	27.12	22°11'59"	26.94	S18°11'11"W
C17	130.00	44.92	19°48'00"	44.70	N15°01'12"E
C18	150.00	82.62	24°16'28"	82.00	N17°15'28"E
C19	150.00	112.23	32°58'37"	110.69	N45°52'36"E
C20	230.00	16.29	04°02'22"	16.28	N67°20'38"E
C21	230.00	105.97	25°23'51"	105.03	N45°07'00"E
C22	150.00	30.79	72°24'58"	30.17	N11°23'32"E
C23	180.00	6.25	01°59'18"	6.25	S89°28'27"E
C24	180.00	60.43	19°14'11"	60.15	S87°18'21"E
C25	150.00	17.13	66°28'42"	16.22	S57°10'08"E
C26	80.00	73.78	70°26'08"	69.20	S59°38'48"E
C27	80.00	46.44	21°12'29"	44.20	N79°19'42"W
C28	80.00	49.54	47°15'04"	48.15	N27°02'28"E
C29	80.00	24.57	23°27'31"	24.39	N17°54'22"E
C30	80.00	50.29	49°03'39"	48.82	N43°29'47"W
C31	80.00	47.78	45°36'12"	46.51	S89°41'47"W
C32	80.00	15.83	15°07'02"	15.78	S59°20'10"W
C33	150.00	10.04	39°19'54"	9.85	S70°56'39"W
C34	130.00	44.45	21°12'29"	44.20	N79°19'42"W
C35	150.00	20.79	72°24'58"	19.17	N11°23'32"E
C36	230.00	74.88	19°36'10"	74.35	N17°29'56"E
C37	230.00	102.78	28°36'21"	101.84	N20°39'20"W
C38	170.00	70.84	22°52'20"	70.33	N41°31'15"W
C39	150.00	13.91	53°07'48"	13.42	S63°28'08"E
C40	80.00	33.86	31°45'48"	32.84	S57°45'03"E
C41	80.00	59.80	57°35'52"	57.36	N57°48'09"E
C42	80.00	97.82	93°24'43"	87.34	N27°31'12"E
C43	80.00	108.88	100°58'39"	94.55	S89°51'31"W
C44	150.00	13.91	53°07'48"	13.42	S63°28'08"E
C45	107.00	25.55	13°41'01"	25.49	S68°28'29"E
C46	230.00	91.24	22°43'47"	90.55	S18°26'07"E
C47	230.00	14.99	02°39'27"	14.89	S11°07'42"E
C48	170.00	132.01	44°29'31"	128.72	S11°12'55"E
C49	170.00	135.96	45°49'21"	132.39	S33°56'41"W
C50	150.00	16.36	05°30'52"	16.36	S59°38'50"W
C51	250.00	81.03	18°12'20"	80.69	S57°18'07"W
C52	150.00	25.39	86°58'25"	22.46	N87°20'25"W
C53	70.00	47.73	38°39'29"	46.34	N19°31'29"W
C54	100.00	35.92	19°42'16"	35.36	N29°31'35"W
C55	128.00	33.76	15°06'37"	33.66	N29°22'29"W



MONUMENT NOTES

- THE SUBDIVISION PLAT NEEDS TO BE STAKED IN THE FIELD USING A 5/8" x 24" REBAR WITH A SURVEY CAP ON ALL LOT AND SUBDIVISION BOUNDARY CORNERS. CAP NEEDS TO INCLUDE THE BUSINESS NAME OR P.L.S. NAME FOLLOWED BY THE LICENSE NUMBER OF THE SURVEYOR IN CHARGE.
- SURVEY MONUMENT - REBAR & ALUMINUM CAP W/ FRAME & COVER TO BE SET.

TABULATIONS

ZONING = R-1.0 & R-1.12
 LANE MILES OF ROAD = 0.65 MILES
 USE: SINGLE-FAMILY DWELLING LOTS



LEGEND

(R) NO PRESSURIZED IRRIGATION IS AVAILABLE IN THIS SUBDIVISION. HOME OWNERS ARE REQUIRED TO PAY CULINARY WATER RATES FOR OUTSIDE IRRIGATION.

APPROVED THIS 7 DAY OF July 2021
 BY *[Signature]*
 TITLE *Professional Seal*

11038 N. Highland Blvd Suite 100
 Highland, UT 84003
 (801) 642-0119

